

BALLOMAX® PN25, DN 65 - 100

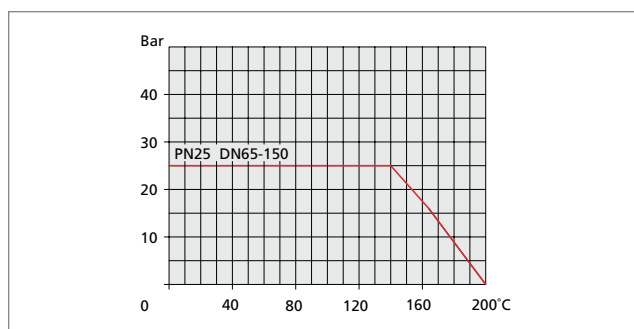
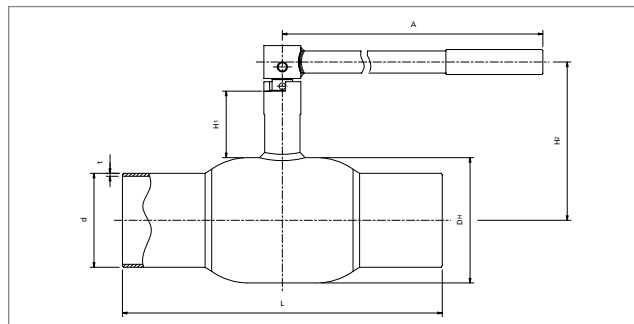
Svejse / svejse

helsvejset stålkugleventil



Welding / Welding

Fully welded steel ball valve



Materialer

Se afsnit 10, 'Grafer / produktbeskrivelser'.

Anvendelse

Varmesystemer, fjernvarme, industrielle formål.

Medier

Vand, luft, olie og andre medier, der ikke nedbryder stålet.

Materials

See section 10, 'Graphs / Product Descriptions'.

Applications

Heating systems, district heating, industrial purposes

Media

Water, air, oil and other fluids which are not decomposing carbon steel.

DN	Katalog nr. Catalogue No.	Boring Bore	D _H	d	t	L	H ₁	H ₂	A	Vægt kg Weight kg
65	64.102.065	50	108	76,1	2,9	360	66	144	275	4,5
80	64.102.080	65	127	88,9	3,2	370	66	154	275	6,0
100	64.102.100	80	152	114,3	3,6	390	81	193	365	9,7