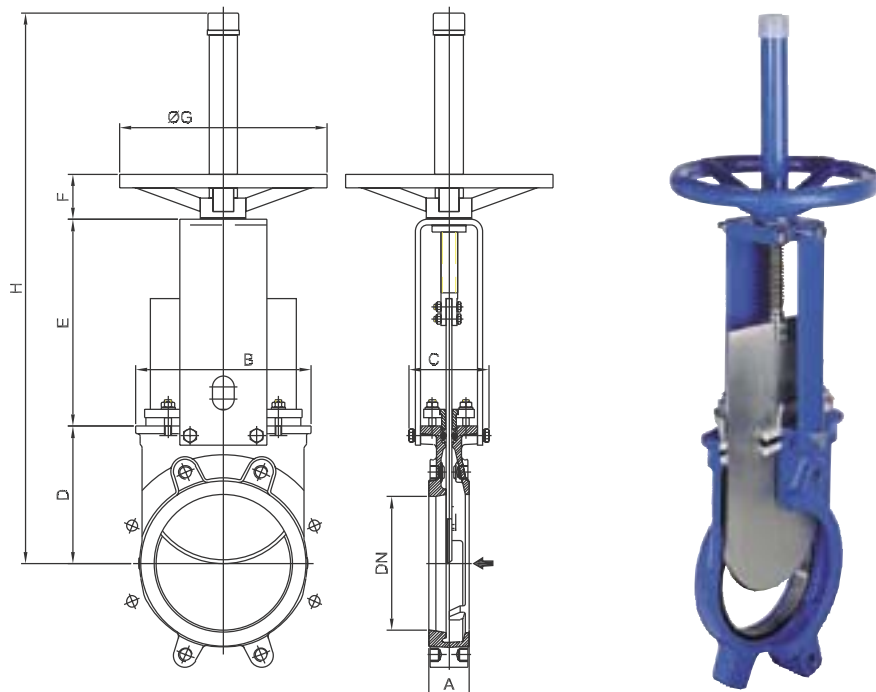
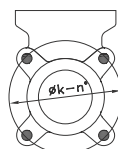


Ovládání ručním kolem / Manually operated



Materiálové provedení / Material

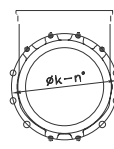
Těleso / Body	0.6025	1.4408
Nůž / Gate	1.4301	1.4401
Těsnění / Seat	EPDM Metal-metal	



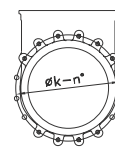
DN 50-65



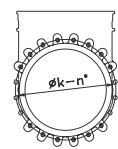
DN 80-200



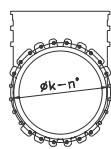
DN 250-300



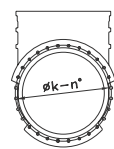
DN 350-400



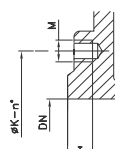
DN 450-600



DN 700-800



DN 900-1000



- Závítové slepé otvory / Threaded blind holes
- ⊕ Průchozí otvory / Through holes

Přípojovací rozměry / Dimensions

DN	A	B	C	D	E	F	ØG	H	K	n	M	T	●	⊕	p _{max} bar	kg
50	40	119	100	105	129	47	225	420	125	4	M16	11	4	-	10	7
65	40	134	100	115	146	47	225	450	145	4	M16	11	4	-	10	8
80	50	149	100	124	162	47	225	475	160	8	M16	11	4	4	10	9
100	50	169	100	140	187	47	225	520	180	8	M16	11	4	4	10	11
125	50	180	100	150	211	47	225	600	210	8	M16	11	4	4	10	15
150	60	210	100	175	237	47	225	652	240	8	M20	14	4	4	10	18
200	60	262	122	205	309	67	310	822	295	8	M20	14	4	4	10	30
250	70	318	122	250	364	67	310	1022	350	12	M20	18	6	6	10	44
300	70	372	122	300	414	67	310	1122	400	12	M20	18	6	6	10	58
350	96	431	197	338	486	66	410	1323	460	16	M20	22	10	6	6	96
400	100	486	197	392	536	66	410	1427	515	16	M24	24	10	6	6	124
450	106	540	201	432	588	66	550	1594	565	20	M24	24	14	6	5	168
500	110	602	201	485	648	66	550	1707	620	20	M24	24	14	6	4	192
600	110	708	201	590	748	66	550	2022	725	20	M27	24	14	6	4	245
700	110	834	380	686	890	74	800	2575	840	24	M27	20	16	8	2	405
800	110	1015	320	791	989	74	800	3479	950	24	M30	20	16	8	2	512
900	110	1040	320	895	1118	74	800	3798	1050	28	M30	20	20	8	2	680
1000	110	1150	320	975	1220	74	800	3980	1160	28	M33	20	20	8	2	865