

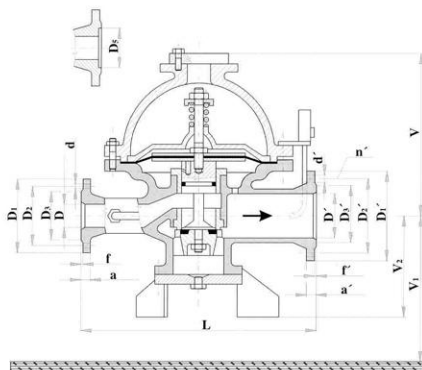
Pressure controller with control stabilizer

C 26 525 540

PN 40

C 26 525 563

PN 63



Application

It is used as a self-acting regulator, which decreases the input vapor pressure and regulates it within tolerant range to the set output pressure. Controller can be used for heating gas as per ČSN 385502, air and other non-aggressive gases. If the fluid is butane-propane, it must be in gaseous state and in composition as per ČSN 656482. Operation temperature range is from -10°C up to 70°C (in consideration of rubber parts). The pipeline must be free of all mechanic impurities, rusts and scale to allow the controller work properly.

Connecting and face-to-face dimensions

Flange connecting dimension Pn 25, PN 40 and PN 63 as per ČSN 131160. Flange face finish as per ČSN 131061 is following:

C26525540

- inlet PN 40 with rugged sealing face (D3)
- outlet PN 25 with rugged sealing face (D3)

C26525563

- inlet PN 63 with recess (D5)
- outlet PN 40 with rugged sealing face (D3)

Installation

The controller is installed to horizontal pipeline only. Vertical controller axis must be perpendicular to horizontal surface, which passes through longitudinal controller axis.

	Overpressure [MPa]				
	input		output		min. difference
	max.	min.	max.	min.	
C 26 525 540	4	0,08	0,9	0,05	0,03
C 26 525 563	6,3	0,08	0,9	0,05	0,03

C 26 525 540

DN	DN'	D	D'	L	V	V ₁	V ₂	D ₁	D ₂	D ₃	D _s	a	f	d	n	D' ₁	D' ₂	D' ₃	a'	f'	d'	n'	kg
25	40	25	40	365	265	300	95	115	85	68	-	18	2	14	4	145	110	88	18	3	18	4	53
32	50	32	50	400	365	300	115	135	100	78	-	18	2	18	4	160	125	102	20	3	18	4	64
50	80	50	80	540	375	455	155	160	125	102	-	20	3	18	4	195	160	138	24	3	18	8	150
80	125	80	125	680	540	650	250	195	160	138	-	24	3	18	8	270	220	188	26	3	27	8	410
100	150	100	150	770	660	750	310	230	190	162	-	24	3	23	8	300	250	218	28	3	27	8	628
150	200	150	200	960	920	800	385	300	250	218	-	28	3	27	8	360	310	278	30	3	27	12	1056

C 26 525 563

DN	DN'	D	D'	L	V	V ₁	V ₂	D ₁	D ₂	D ₃	D _s	a	f	d	n	D' ₁	D' ₂	D' ₃	a'	f'	d'	n'	kg
25	40	25	40	365	265	300	95	135	100	-	58	24	2	18	4	145	110	88	18	3	18	4	54
50	80	50	80	540	675	455	155	175	135	-	88	26	3	23	4	195	160	138	24	3	18	8	146
80	125	80	125	680	540	650	250	210	170	-	121	28	3	23	8	270	220	188	26	3	27	8	410
100	150	100	150	770	660	750	310	250	200	-	150	30	3	27	8	300	250	218	28	3	27	8	628
150	200	150	200	960	920	800	385	340	280	-	204	36	3	33	8	375	320	280	34	3	30	12	1070